

THERMAL PERFORMANCE

CHECKLIST
(TICK ALL)

ENSURE XTROWALL PLUS 110 IS SECURED FIRMLY AGAINST INNER LEAF OF CAVITY WALL

ENSURE FULL DEPTH OF FR/ALU OVER JOISTS EXTENDS TO ROOF EDGE

FIT MINERAL WOOL OVER WALL TOP WITHIN GABLE LADDER. FULLY FILL VOID, WITH A MINIMUM R VALUE OF 5.00 M² K/W ENSURING THAT INSULATION IS INSTALLED TIGHTLY BETWEEN JOISTS AND IS IN CONTACT WITH ROOF DECK

ENSURE WALL TOP IS LEVEL AND THAT XTROWALL PLUS 110 IS TAKEN UP LEVEL WITH WALL TOP

ENSURE PARTIAL FILL XTROWALL PLUS 110 IS SECURED FIRMLY AGAINST INNER LEAF OF CAVITY WALL

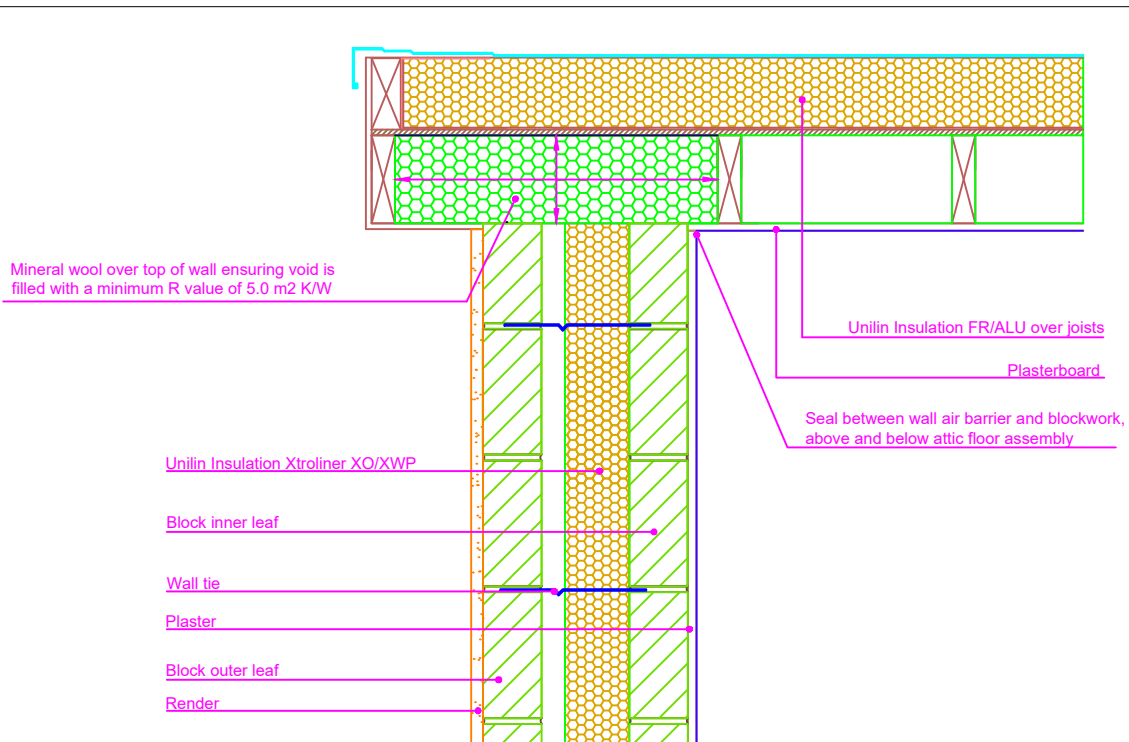


AIR BARRIER - CONTINUITY

CHECKLIST
(TICK ALL)

SEAL ALL PENETRATIONS THROUGH AIR BARRIER USING A FLEXIBLE SEALANT

FIX CEILING FIRST, AND SEAL ALL GAPS BETWEEN CEILING AND MASONRY WALL WITH EITHER PLASTER, ADHESIVE OR FLEXIBLE SEALANT



Drawings are for illustration purpose only - not to scale
Details are based on the acceptable construction details
Refer to S.R. 325 for further guidance on detailing

Copyright © *2023, Unilin Insulation,
All rights reserved

GENERAL NOTES

Keep cavities clean of mortar snots and other debris during construction
BS5250 requires vapour control layer to be installed between deck and insulation.
Turn up vapour control layer at edge of roof insulation, lap with roof waterproofing layer, and seal.
Ensure cavity is closed with Suitable Fire-Barrier



CERT No: IAB/TM/01
Thermal Modelers Scheme

Xtrowall Plus 110	110mm
Psi Value ψ (W/mK)	0.043
Temperature Factor (<i>f</i>)	0.97
U-Value Wall (W/m ² K)	0.15
U-Value Ceiling (W/m ² K)	0.15 - 0.20

Email: info.ui@unilin.com
Phone No: 046 9066050

To be read in conjunction with the Acceptable Construction Details
Any changes to the above construction may change the calculated values
The U values indicated on this certificate are the actual U values for the proposed construction.
The Psi values are calculated using the modelled U value in accordance with the guidelines set out in BR497 and ISO 10211. Contact Unilin Insulation technical support for further guidance